

Led Product
Catalogue
2023-24



Corporate Office / R&D Centre / Production Unit

Don't be mean;
be **GREEN**
because
Green actions
speaks louder than
the grey words.



R&D LAB



SMT SECTION



OFFICE BLOCK



ASSEMBLY LINE

WHY US

- ▶ We follow the principle of Make in India and serve the nation by processing most of the raw material available in India.
- ▶ Customer satisfaction is our prime objective.
- ▶ In house R&D Lab helps us in bringing innovation & reliability to our products.
- ▶ Wide product range available under one roof which helps in catering all kinds of lighting requirements for our OEM buyers.
- ▶ We make energy efficient yet economical products with the help of latest technology & innovations.
- ▶ Our latest product range offers principle of "SAVE ENERGY-SAVE THE ENVIRONMENT & ENHANCED VALUE FOR MONEY".

| INDEX | PAGE NO. | INDEX | PAGE NO. |
|--------------------------------------|-----------------|--|-----------------|
| FLOODLIGHT GLASS SERIES | 02 | DEEP COB DOWNLIGHT | 19 |
| FLOODLIGHT LENSE SERIES | 03 | TILTABLE COB DOWNLIGHT | 20 |
| STREETLIGHT PRIDE & LENSE SERIES | 04 | COB TRACK / WALL SPOTS | 21 |
| ALUMINUM SLIM & SURFACE PANEL | 06 | COB SURFACE CYLINDERS | 22 |
| PC SLIM RECESS PANEL | 07 | EXOTIC PANEL SERIES | 24 |
| PC SURFACE PANEL | 08 | PROFILE PANEL | 25 |
| PC BACKLIT PANEL | 09 | PROGRESSIVE & LINEAR BLADE SERIES | 26 |
| ADJUSTABLE PANEL | 10 | NICHE AREA LIGHTING | 27 |
| DUAL CCT RECESS & SURFACE PANEL | 11 | ROPE, STRIP & NEON FLEX | 28 |
| COMMERCIAL PANEL | 12 | BULKHEAD & BULKHEAD CUM STREETLIGHT | 29 |
| DEEP / JUNCTION & SURFACE DOWNLIGHTS | 14 | LANDSCAPE & OUTDOOR WALL LIGHTS | 30 |
| CONCEAL DOWNLIGHTS | 15 | SOLAR STREETLIGHTS | 31 |
| DOB CONCEAL DOWNLIGHTS | 16 | MAGNETIC TRACKS | 32 |
| PC COB CONCEAL - SMD & MOVEABLE COB | 18 | | |

nothing can dim
the Light
that shines from
our streetlights...



OUTDOOR LIGHTS

FLOODLIGHT GLASS SERIES | FLOODLIGHT LENSE SERIES
STREETLIGHT PRIDE SERIES | STREETLIGHT LENSE SERIES



FHW Series

FLOODLIGHT GLASS SERIES

| Product Code | Series | Watt | Dimension | | | Weight (Kg) | Surge |
|---------------|------------|------|-------------|--------------|-------------|-------------|------------|
| | | | Length (mm) | Breadth (mm) | Height (mm) | | |
| GGFL 10 (BC) | FHW Series | 10 | 100 | 115 | 35 | 0.235 | 4KV / 440V |
| GGFL 20 (BC) | FHW Series | 20 | 115 | 145 | 38 | 0.475 | 4KV / 440V |
| GGFL 30 (BC) | FHW Series | 30 | 184 | 180 | 43.5 | 0.900 | 4KV / 440V |
| GGFL 50 (BC) | FHW Series | 50 | 220 | 250 | 50 | 1.450 | 6KV / 440V |
| GGFL 100 (BC) | FHW Series | 100 | 275 | 285 | 55 | 2.400 | 6KV / 440V |
| GGFL 150 (BC) | FHW Series | 150 | 297 | 277 | 68 | 3.860 | 6KV / 440V |
| GGFL 200 (BC) | FHW Series | 200 | 360 | 330 | 77 | 5.670 | 6KV / 440V |

Operating Voltage: 100 - 440VAC **IP Rating:** IP 66 **Power Factor:** >0.95 **CRI:** >80 **Colour Temp:** 6000K / 3000K





LHW Series



LAB Series

FLOODLIGHT LENSE SERIES

| Product Code | Series | Watt | Dimension | | | Weight (Kg) | Surge |
|--------------|------------|------|-------------|--------------|-------------|-------------|------------|
| | | | Length (mm) | Breadth (mm) | Height (mm) | | |
| GGFL 30LHW | LHW Series | 30 | 170 | 181 | 30 | 0.70 | 4KV / 440V |
| GGFL 50LHW | LHW Series | 50 | 195 | 212 | 30 | 0.86 | 6KV / 440V |
| GGFL 100LHW | LHW Series | 100 | 270 | 280 | 30 | 1.58 | 6KV / 440V |
| GGFL 200LHW | LHW Series | 200 | 323 | 325 | 30 | 2.50 | 6KV / 440V |
| GGFL 30LAB | LAB Series | 30 | 200 | 161 | 37 | 0.65 | 4KV / 440V |
| GGFL 50LAB | LAB Series | 50 | 245 | 188 | 37 | 0.85 | 6KV / 440V |
| GGFL 100LAB | LAB Series | 100 | 295 | 220 | 44 | 1.40 | 6KV / 440V |
| GGFL 200LAB | LAB Series | 200 | 375 | 280 | 44 | 3.20 | 6KV / 440V |

Operating Voltage: 100 - 440VAC **IP Rating:** IP 66 **Power Factor:** >0.95 **CRI:** >80 **Colour Temp:** 6000K / 3000K



PR Series



LSH Series



LAB Series

STREETLIGHT PRIDE & LENSE SERIES

| Product Code | Series | Wattage | Dimension in mm | | | | Wt. (Kg.) | Surge |
|------------------|------------|---------|-----------------|---------|--------|----------|-----------|------------|
| | | | Length | Breadth | Height | Pole Dia | | |
| GGLSL 16 (PR) | PR Series | 16 | 257 | 85 | 55 | 35 | 0.280 | 4KV / 440V |
| GGLSL 25/30 (PR) | PR Series | 25/30 | 337 | 103 | 65 | 43 | 0.680 | 4KV / 440V |
| GGLSL 25LSH | LSH Series | 25 | 280 | 108 | 55 | 50 | 0.480 | 4KV / 440V |
| GGLSL 40LSH | LSH Series | 40 | 330 | 128 | 55 | 50 | 0.690 | 4KV / 440V |
| GGLSL 50/60LSH | LSH Series | 50/60 | 375 | 165 | 55 | 54 | 1.200 | 6KV / 440V |
| GGLSL 100LSH | LSH Series | 100 | 445 | 190 | 55 | 58 | 1.600 | 6KV / 440V |
| GGLSL 25LAB | LAB Series | 25 | 291 | 119 | 46 | 35 | 0.510 | 4KV / 440V |
| GGLSL 36LAB | LAB Series | 36 | 385 | 142 | 46 | 35 | 0.610 | 4KV / 440V |
| GGLSL 50LAB | LAB Series | 50 | 365 | 172 | 46 | 35 | 0.780 | 6KV / 440V |
| GGLSL 100LAB | LAB Series | 100 | 410 | 200 | 46 | 60 | 1.190 | 6KV / 440V |
| GGLSL 150LAB | LAB Series | 150 | 535 | 224 | 38 | 60 | 1.800 | 6KV / 440V |
| GGLSL 200LAB | LAB Series | 200 | 588 | 235 | 40 | 60 | 2.100 | 6KV / 440V |

Operating Voltage: 100 - 440VAC **IP Rating:** IP 65 **Power Factor:** >0.95 **CRI:** >80 **Colour Temp:** 6000K / 3000K

There are two ways of spreading light;
to be the candle or the mirror
that reflects it or
simply adore GLOW GREEN LEDs.



PANEL LIGHTS

ALUMINUM SLIM & SURFACE PANELS | PC SLIM & SURFACE PANELS | PC SURFACE PANEL
PC BACKLIT PANEL | ADJUSTABLE PANEL | DUAL CCT RECESS & SURFACE PANELS | COMMERCIAL PANELS



ALUMINUM SLIM & SURFACE PANEL

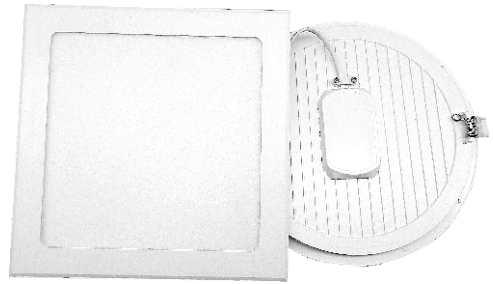
| Product Code | Type | Wattage | Length / Dia (mm) | Breadth (mm) | Height (mm) | Cut Out (mm) |
|----------------------|----------|---------|-------------------|--------------|-------------|--------------|
| GGDLPL 3 R / SQ (E) | Recessed | 3 | 85 | 85 | 23 | 70 |
| GGDLPL 6 R / SQ (E) | Recessed | 6 | 120 | 120 | 23 | 105 |
| GGDLPL 9 R / SQ (E) | Recessed | 9 | 145 | 145 | 23 | 125 |
| GGDLPL 12 R / SQ (E) | Recessed | 12 | 170 | 170 | 23 | 155 |
| GGDLPL 18 R / SQ (E) | Recessed | 18 | 225 | 225 | 23 | 205 |
| GGDLPL 24 R / SQ (E) | Recessed | 24 | 300 | 300 | 23 | 280 |
| GGDLPL 6 R / SQ SM | Surface | 6 | 120 | 120 | 35 | - |
| GGDLPL 12 R / SQ SM | Surface | 12 | 170 | 170 | 35 | - |
| GGDLPL 18 R / SQ SM | Surface | 18 | 225 | 225 | 35 | - |
| GGDLPL 24 R / SQ SM | Surface | 24 | 300 | 300 | 35 | - |

Operating Voltage: 100 - 440VAC **IP Rating:** IP 20 **Power Factor:** >0.95 **CRI:** >80

Colour Temp: 6000K / 4000K / 3000K **Note:** Colour Temp.: Red / Green / Blue also available in 3W & 6W panels



OR Series



CR Series

PC SLIM RECESS PANEL

| Product Code | Series | Wattage | Length / Dia (mm) | Breadth (mm) | Height (mm) | Cut Out (mm) |
|------------------------|-----------|---------|-------------------|--------------|-------------|--------------|
| GGDLPL 3 R / SQ (ECR) | CR Series | 3 | 85 | 85 | 28 | 70 |
| GGDLPL 6 R / SQ (ECR) | CR Series | 6 | 120 | 120 | 28 | 105 |
| GGDLPL 12 R / SQ (ECR) | CR Series | 12 | 170 | 170 | 28 | 150 |
| GGDLPL 18 R / SQ (ECR) | CR Series | 18 | 220 | 220 | 28 | 205 |
| GGDLPL 3 R / SQ (EOR) | OR Series | 3 | 92.5 | 92.5 | 30 | 75 |
| GGDLPL 6 R / SQ (EOR) | OR Series | 6 | 118 | 118 | 30 | 100 |
| GGDLPL 12 R / SQ (EOR) | OR Series | 12 | 142 | 142 | 30 | 125 |
| GGDLPL 15 R / SQ (EOR) | OR Series | 15 | 167 | 167 | 30 | 150 |
| GGDLPL 18 R / SQ (EOR) | OR Series | 18 | 217 | 217 | 30 | 200 |

Operating Voltage: 100 - 440VAC **IP Rating:** IP 20 **Power Factor:** >0.95 **CRI:** >80

Colour Temp: 6000K / 4000K / 3000K



FD Series

PC SURFACE PANEL

| Product Code | Series | Wattage | Length / Dia (mm) | Breadth (mm) | Height (mm) |
|------------------------|-----------|---------|-------------------|--------------|-------------|
| GGDLPL 6 R / SQ (SFD) | FD Series | 6 | 90 | 90 | 27 |
| GGDLPL 12 R / SQ (SFD) | FD Series | 12 | 120 | 120 | 27 |
| GGDLPL 18 R / SQ (SFD) | FD Series | 18 | 155 | 155 | 27 |
| GGDLPL 24 R / SQ (SFD) | FD Series | 24 | 190 | 190 | 27 |

Operating Voltage: 100 - 440VAC **IP Rating:** IP 20 **Power Factor:** >0.95 **CRI:** >80

Colour Temp: 6000K / 4000K / 3000K

Trimless Surface Panel in PC housing installed with high efficient low glare sheet for optimum light distribution.



**3 in 1
 also
 available**



GM Series



RDL Series



DIV Series

PC BACKLIT PANEL

| Product Code | Series | Wattage | Length / Dia (mm) | Breadth (mm) | Height (mm) | Cut Out (mm) | Surface Ring |
|-----------------|-----------------|---------|-------------------|--------------|-------------|--------------|--------------|
| GGRDL 5 R / SQ | RDL Series | 5 | 82 | 82 | 35 | 65 | No |
| GGRDL 8 R / SQ | RDL / GM Series | 8 | 115 | 115 | 35 | 100 | Available |
| GGRDL 12 R / SQ | RDL Series | 12/15 | 145 | 145 | 35 | 125 | Available |
| GGRDL 15 R / SQ | RDL / GM Series | 15 | 165 | 165 | 35 | 150 | Available |
| GGRDL 22 R / SQ | RDL Series | 22 | 220 | 220 | 35 | 200 | Available |
| GGDIV 10 R | DIV Series | 10 | 130 | - | 40 | 107 | No |

Operating Voltage: 100 - 440VAC **IP Rating:** IP 20 **Power Factor:** >0.95 **CRI:** >80

Colour Temp: 6000K / 4000K / 3000K



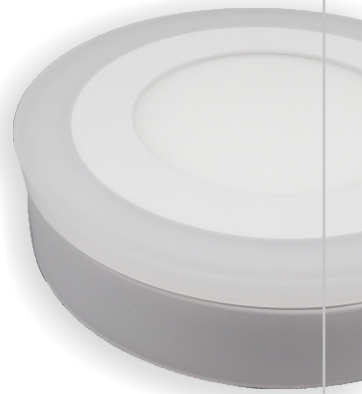
CA Series

ADJUSTABLE PANEL

| Product Code | Series | Wattage | Length / Dia (mm) | Breadth (mm) | Height (mm) | Cut Out (mm) |
|------------------------|-----------|---------|-------------------|--------------|-------------|--------------|
| GGDLPL 6 R / SQ(CADJ) | CA Series | 6 | 100 | 100 | 25 | 45-80 |
| GGDLPL 9 R / SQ(CADJ) | CA Series | 9 | 115 | 115 | 25 | 45-80 |
| GGDLPL 15 R / SQ(CADJ) | CA Series | 15 | 175 | 175 | 25 | 45-130 |
| GGDLPL 20 R / SQ(CADJ) | CA Series | 20 | 230 | 230 | 25 | 45-180 |

Operating Voltage: 100 - 440VAC **IP Rating:** IP 20 **Power Factor:** >0.95 **CRI:** >80

Colour Temp: 6000K / 4000K / 3000K



DUAL CCT RECESS & SURFACE PANEL

| Product Code | Type | Wattage | Dia (mm) | Height (mm) | Cut Out (mm) |
|-------------------|----------|---------|----------|-------------|--------------|
| GGDCCT 3+3 R (E) | Recessed | 3+3 | 105 | 28 | 65 |
| GGDCCT 6+3 R (E) | Recessed | 6+3 | 145 | 28 | 100 |
| GGDCCT 12+4 R (E) | Recessed | 12+4 | 190 | 28 | 150 |
| GGDCCT 3+3 RSM | Surface | 3+3 | 105 | 35 | - |
| GGDCCT 6+3 RSM | Surface | 6+3 | 145 | 35 | - |
| GGDCCT 12+4 RSM | Surface | 12+4 | 190 | 35 | - |

Operating Voltage: 100 - 300VAC **IP Rating:** IP 20 **CRI:** >80 **Colour Temp:** 6000K + R / B / G / P / PGB / PBGRY / 3K



COMMERCIAL PANEL

| Product Code | Wattage | Length / Dia (mm) | Breadth (mm) | Height (mm) | Weight (Kg) |
|--------------|---------|-------------------|--------------|-------------|-------------|
| GGLD 36 (P) | 36 | 595 | 595 | 40 | 1.70 |
| GGLD 48 (P) | 48 | 595 | 595 | 40 | 1.70 |

Operating Voltage: 100 - 440VAC **IP Rating:** IP 20 **Power Factor:** >0.95 **CRI:** >80 **Colour Temp:** 6000K



As we work to create
light for others,
we naturally light
our own way...



DOWNLIGHTS

DEEP / JUNCTION & SURFACE DOWNLIGHT | CONCEAL DOWNLIGHT | DOB CONCEAL



JN Series



DP Series



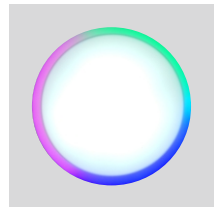
PN Series



GL Series



GL Series



PN Series

DEEP / JUNCTION & SURFACE DOWNLIGHTS

| Product Code | Series | Type | Wattage | Dia (mm) | Cut Out (mm) | Height (mm) | CCT Tuneable |
|--------------------|-----------|-----------------|---------|----------|--------------|-------------|--------------|
| GGDEEP 3M | JN Series | Deep / Junction | 3 | 80 | 45 | 33 | Available |
| GGDEEP 3N | JN Series | Deep | 3 | 80 | 45 | 45 | Available |
| GGDEEP 8SH | DP Series | Deep | 8 | 85 | 45 | 65 | Available |
| GGDEEP 15SH | DP Series | Deep | 15 | 140 | 45 | 58 | Available |
| GGSF 8 (GL) | GL Series | Surface | 8 | 85 | - | 45 | Available |
| GGSF 15 (GL) | GL Series | Surface | 15 | 140 | - | 45 | Available |
| GGDEEP 7 (PAN) | PN Series | Deep | 7 | 85 | 45 | 45 | NA |
| GGDEEP 7+7 (PAN) | PN Series | Deep | 7+7 | 85 | 45 | 45 | Available |
| GGDEEP 12+12 (PAN) | PN Series | Deep | 12+12 | 115 | 50 | 45 | Available |

Operating Voltage: 100 - 440VAC **IP Rating:** IP 20 **Power Factor:** >0.95 **CRI:** >80 **Colour Temp:** W/WW/R/G/B/P



SR Series



MIR Series



LGP Series



CMT Series



BPS Series



JLL Series



PA Series

CONCEAL DOWNLIGHTS

| Product Code | Series | Wattage | Dia (mm) | Cut Out (mm) | Height (mm) | Housing Material | CCT Tuneable |
|--------------|------------|---------|----------|--------------|-------------|------------------|--------------|
| GGCL 7JLL | JLL Series | 7 | 110 | 75 | 60 | PC + AL | Available |
| GGCL 7BPS | BPS Series | 7 | 110 | 75 | 50 | PC + AL | Available |
| GGCL 7MIR | MIR Series | 7 | 110 | 75 | 50 | PC + AL | Available |
| GGCL 7CMT | CMT Series | 7 | 110 | 75 | 50 | PC + AL | Available |
| GGCL 9SR | SR Series | 9 | 111 | 75 | 45 | AL | Available |
| GGCL 9PA | PA Series | 9 | 111 | 75 | 45 | AL | Available |
| GGCL 9LGP | LGP Series | 9 | 123 | 75 | 42 | AL Casted | Available |

Operating Voltage: 100 - 440VAC **IP Rating:** IP 20 **Power Factor:** >0.95 **CRI:** >80 **Colour Temp:** W/WW/R/G/B/P



SUN Series



BLK Series

DOB CONCEAL DOWNLIGHTS

| Product Code | Series | Wattage | Dia (mm) | Cut Out (mm) | Height (mm) | CCT Tuneable |
|--------------|------------|---------|----------|--------------|-------------|--------------|
| GGCL 7SUN | SUN Series | 7 | 112 | 75 | 30 | Available |
| GGCL 7BLK | BLK Series | 7 | 110 | 75 | 25 | Available |

Colour Temp: W / WW / R / G / B / P

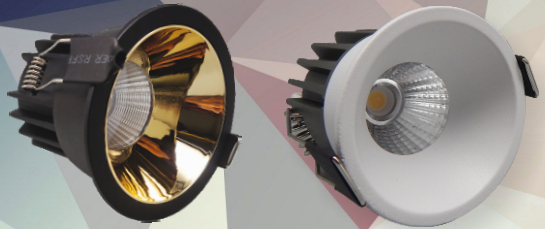
Operating Voltage: 100 - 440VAC **IP Rating:** IP 20 **Power Factor:** >0.95 **CRI:** >80





There is always **light**. If only we're brave enough to see it.

If only we're brave enough to be it.



COB LIGHTS

PC COB CONCEAL - SMD & MOVEABLE COB | DEEP COB DOWNLIGHT
TILTABLE COB | COB TRACK / WALL SPOTS | COB SURFACE CYLINDERS



LD Series



CD Series

PC COB CONCEAL - SMD & MOVEABLE COB

| Product Code | Series | Wattage | Dia (mm) | Cut Out (mm) | Height (mm) |
|--------------|-----------|---------|----------|--------------|-------------|
| GGDL 4LD | LD Series | 4 | 70 | 55 | 40 |
| GGDL 7LD | LD Series | 7 | 105 | 80 | 50 |
| GGDL 12LD | LD Series | 12 | 130 | 100 | 55 |
| GGDL 3CD | CD Series | 3 | 70 | 40 | 34 |
| GGDL 7CD | CD Series | 7 | 106 | 75 | 55 |

Operating Voltage: 100 - 440VAC **IP Rating:** IP 20 **Power Factor:** >0.95 **CRI:** >80 **Colour Temp:** 6000K / 4000K / 3000K

Recessed cob spot light made up of PC housing with Industrial Grade Constant Current Constant Voltage Led Driver.



TECHNICAL
SPECIFICATIONS

3 in 1
 also
 available



DPC Series



DRC Series



DPC Series



EYE Series

DEEP COB DOWNLIGHT

| Product Code | Series | Wattage | Dia (mm) | Cut Out (mm) | Height (mm) | Housing Option |
|----------------|------------|---------|----------|--------------|-------------|----------------|
| GGLD D7 (DPC) | DPC Series | 7 | 60 | 50 | 70 | White / Black |
| GGLD D12 (DPC) | DPC Series | 12 | 85 | 75 | 80 | White / Black |
| GGLD D18 (DPC) | DPC Series | 18 | 95 | 85 | 100 | White / Black |
| GGLD 7 (EYE) | EYE Series | 7 | 65 | 54 | 60 | White / Black |
| GGLD D7 (DRC) | DRC Series | 7 | 75 | 65 | 60 | White / Black |
| GGLD D12 (DRC) | DRC Series | 12 | 85 | 75 | 80 | White / Black |
| GGLD D18 (DRC) | DRC Series | 18 | 95 | 85 | 100 | White / Black |

Operating Voltage: 100 - 440VAC **IP Rating:** IP 20 **Power Factor:** >0.95 **CRI:** >80 **Colour Temp:** 6000K / 4000K / 3000K



3 in 1
 also
 available



TILTABLE COB DOWNLIGHTS

| Product Code | Wattage | Dia (mm) | Cut Out (mm) | Height (mm) |
|---------------|---------|----------|--------------|-------------|
| GGLD 5 (COB) | 5 | 60 | 50 | 40 |
| GGLD 9 (COB) | 9 | 80 | 70 | 55 |
| GGLD 15 (COB) | 15 | 100 | 90 | 75 |
| GGLD 25 (COB) | 25 | 120 | 110 | 90 |
| GGLD 30 (COB) | 30 | 150 | 130 | 100 |
| GGLD 50 (COB) | 50 | 170 | 150 | 120 |

Operating Voltage: 100 - 440VAC **IP Rating:** IP 20 **Power Factor:** >0.95 **CRI:** >80 **Colour Temp:** 6000K / 4000K / 3000K

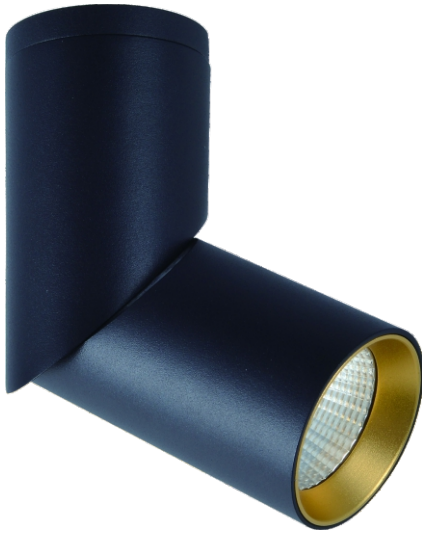


COB TRACK / WALL SPOTS

| Product Code | Wattage | Dia (mm) | Height (mm) | Housing Options | Wall Spot Base |
|----------------|-----------|----------|-------------|-----------------|----------------|
| GGNTR 10 (COB) | 10 | 50 | 130 | White / Black | Available |
| GGNTR 20 (COB) | 20 | 65 | 160 | White / Black | Available |
| GGNTR 30 (COB) | 30 | 75 | 180 | White / Black | Available |
| GGNTR (CNV) | Universal | 85 | 20 | White / Black | Converter |

Operating Voltage: 100 - 440VAC **IP Rating:** IP 20 **Power Factor:** >0.95 **CRI:** >80

Colour Temp: 6000K / 4000K / 3000K



TLT Series



REF Series

COB SURFACE CYLINDERS

| Product Code | Series | Wattage | Dia (mm) | Height (mm) | Housing Options |
|------------------|------------|---------|----------|-------------|-----------------|
| GGLD 6RSM (LEN) | LEN Series | 6 | 50 | 70 | Black |
| GGLD 12RSM (LEN) | LEN Series | 12 | 70 | 90 | Black |
| GGLD 18RSM (LEN) | LEN Series | 18 | 95 | 100 | Black |
| GGLD 6RSM (REF) | REF Series | 6 | 55 | 80 | Black |
| GGLD 12RSM (REF) | REF Series | 12 | 75 | 100 | Black |
| GGLD 18RSM (REF) | REF Series | 18 | 95 | 115 | Black |
| GGLD 12RSM (TLT) | TLT Series | 12 | 55 | 162 | White / Black |

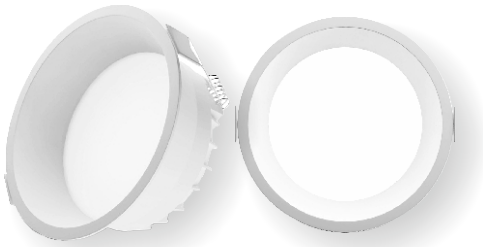
Operating Voltage: 100 - 440VAC **IP Rating:** IP 20 **Power Factor:** >0.95 **CRI:** >80
Colour Temp: 6000K / 4000K / 3000K

As we work to create
light for others,
we naturally light
our own way.



ARCHITECTURAL LIGHTING

EXOTIC PANEL SERIES | PROGRESSIVE SERIES | MAGNETIC TRACKS SERIES | ROPE + STRIP + NEON FLEX
NICHE AREA LIGHTING (STRIKER) | LANDSCAPE & OUTDOOR WALL LIGHTS | BULKHEAD cum STREETLIGHT | SOLAR STREETLIGHTS



PCD Series



DL Series



GR Series



DV Series

EXOTIC PANEL SERIES

| Product Code | Series | Wattage | Dia (mm) | Cut Out (mm) | Height (mm) | Housing Options |
|--------------|------------|---------|----------|--------------|-------------|-----------------|
| GGEPS 12 PCD | PCD Series | 12 | 120 | 110 | 52 | Round |
| GGEPS 18 PCD | PCD Series | 18 | 152 | 140 | 56 | Round |
| GGEPS 06 DL | DL Series | 6 | 85 | 75 | 30 | Round |
| GGEPS 12 DL | DL Series | 12 | 110 | 100 | 30 | Round |
| GGEPS 18 DL | DL Series | 18 | 155 | 145 | 30 | Round |
| GGEPS 12 DV | DV Series | 12 | 120 | 110 | 50 | Round / Square |
| GGEPS 18 DV | DV Series | 18 | 155 | 145 | 55 | Round / Square |
| GGEPS 24 DV | DV Series | 24 | 175 | 165 | 55 | Round / Square |
| GGEPS 12 GR | GR Series | 12 | 90 | 85 | 56 | Round |
| GGEPS 18 GR | GR Series | 18 | 100 | 95 | 56 | Round |

Operating Voltage: 100 - 440VAC **IP Rating:** IP 20 **Power Factor:** >0.95 **CRI:** >80 **Colour Temp:** 6000K/4000K/3000K

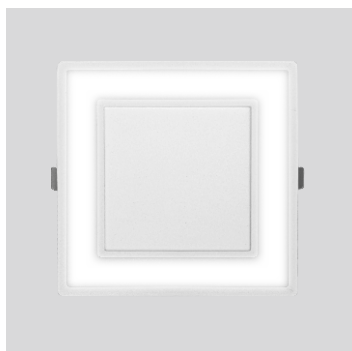
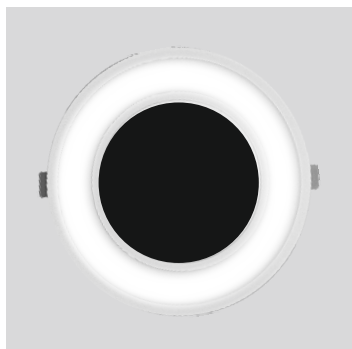
Recessed downlighters made up of aluminium casted housing - glare free light output complete with Industrial Grade Constant Current Constant Voltage Led Driver.



**TECHNICAL
SPECIFICATIONS**



PP Series



PROFILE PANEL

| Product Code | Series | Wattage | Size (mm) | Cut Out (mm) | Height (mm) |
|--------------|-----------|---------|-----------|--------------|-------------|
| GGPP 12R | PP Series | 12 | 165 | 155 | 28 |
| GGPP 12S | PP Series | 12 | 165 X 165 | 155 X 155 | 28 |

Operating Voltage: 100 - 440VAC **IP Rating:** IP 20 **Power Factor:** >0.95 **CRI:** >80 **Colour Temp:** 6000K/4000K/3000K





ZM Series



PO Series



LB Series

PROGRESSIVE & LINEAR BLADE SERIES

| Product Code | Series | Wattage | Size / Dia (mm) | Height (mm) | Cut Out (mm) | Housing Options |
|--------------|-----------|---------|-----------------|-------------|--------------|-----------------|
| GGPS 10LB | LB Series | 10 | 148 x 45 | 32 | 139 x 33 | White / Black |
| GGLD 12PO | PO Series | 12 | 85 | 90 | 75 | White / Black |
| GGLD 18PO | PO Series | 18 | 105 | 120 | 95 | White / Black |
| GGLD 20ZM | ZM Series | 20 | 110 | 90 | 95 | White |
| GGLD 30ZM | ZM Series | 30 | 135 | 120 | 115 | White |
| GGLD 40ZM | ZM Series | 40 | 160 | 130 | 145 | White |





SPOT Series



STRIKER Series



STRIKER Lense



STRIKER Series

NICHE AREA LIGHTING

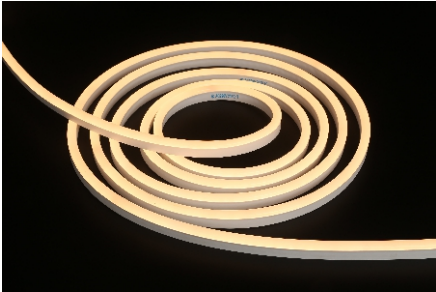
| Product Code | Series | Wattage | Dimension | | |
|--------------|---------------|---------|-----------|--------------|-------------|
| | | | Dia (mm) | Cut Out (mm) | Height (mm) |
| GGNAL 2S | Spot | 2 | 44 | 34 | 16 |
| GGNAL 3ST | Striker | 3 | 70 | - | 15 |
| GGNAL 3STL | Striker Lense | 3 | 60 | - | 17 |
| GGNAL 5STN | Striker | 5 | 63 | - | 16 |
| GGNAL 7STN | Striker | 7 | 75 | - | 20 |

Operating Voltage: 100 - 440VAC

CRI: >80

Colour Temp: W / WW / R / G / B / P





NEON FLEX Series



ROPE LIGHT Series

ROPE, STRIP & NEON FLEX

| Product Code | Series | Wattage | LED's / Meter | Roll Size (Meter) | IP Rating |
|--------------------|-------------|----------|---------------|-------------------|-----------|
| GG2835 120D | Rope Light | 9W / Mtr | 120 | 50 | IP 65 |
| GG2835 144D | Rope Light | 9W / Mtr | 144 | 50 | IP 65 |
| Gg2835 NFLEX | Neon Flex | 6W | NA | 5 | IP 65 |
| GGST 2835 (60) NWP | Strip Light | 6W / Mtr | 60 | 5 | IP 20 |
| GGST 2835 (60) WP | Strip Light | 6W / Mtr | 60 | 5 | IP 65 |



Bulkhead cum Streetlight

BULKHEAD

| Product Code | Wattage | Dimension | | |
|----------------|---------|-------------|--------------|-------------|
| | | Length (mm) | Breadth (mm) | Height (mm) |
| GGSF 10 (BH) | 10 | 170 | 70 | 50 |
| GGSF 20 (BH) | 20 | 210 | 100 | 60 |
| GGSF 20 (SLBH) | 20 | 210 | 81 | 67 |

Operating Voltage: 100 - 440VAC **IP Rating:** IP 65 **Power Factor:** >0.95 **CRI:** >80 **Colour Temp:** W/WW/R/G/B/P



LANDSCAPE LIGHTS



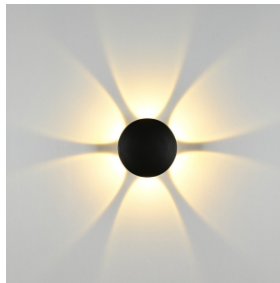
SPK Series



DISC Series



CROWN Series



BLOSSOM Series

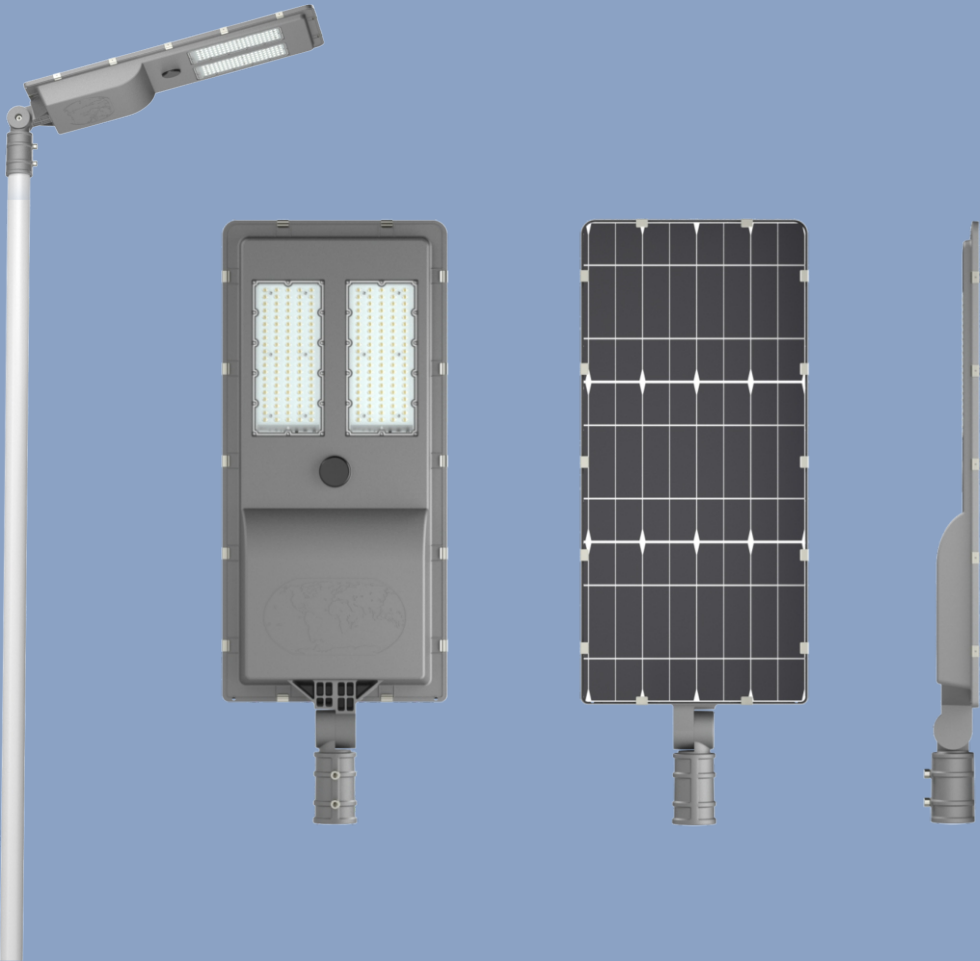


FK Series

OUTDOOR WALL LIGHTS

| Product Code | Series | Watt | Length (mm) | Breadth (mm) | Height (mm) |
|--------------------|----------------|--------|-------------|--------------|-------------|
| GGUDL 3 W (HK) | HK Series | 1 x 3W | 75 | 80 | 65 |
| GGUDL 2 x 3 W (HK) | FK Series | 2 x 3W | 140 | 80 | 65 |
| GGUDL 2WA(2WY) | Crown Series | 2 x 1W | 70 | 70 | 40 |
| GGUDL 4WA(2WY) | Crown Series | 4 x 1W | 120 | 75 | 40 |
| GGUDL 6WA(2WY) | Crown Series | 6 x 1W | 170 | 80 | 40 |
| GGUDL 8WA(2WY) | Crown Series | 8 x 1W | 230 | 90 | 50 |
| GGUDL 4WB(2WY) | Kiara Series | 4 x 1W | 110 | 80 | 35 |
| GGUDL 6WB(2WY) | Kiara Series | 6 x 1W | 158 | 80 | 35 |
| GGUDL 4WA(4WY) | Disc Series | 4 x 1W | 60 | - | - |
| GGUDL 4WB(6WY) | Blossom Series | 6W | 123 | - | 50 |
| GGOLSL 7(COB) | SPK Series | 7W | 60 | - | 78 |

Operating Voltage: 100 - 300VAC **IP Rating:** 65 **CRI:** >80



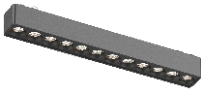
SOLAR STREETLIGHTS

| Product Code | Wattage | Solar Panel | Battery | Operational Hours | Dimensions (mm) |
|--------------|----------|-------------|-------------|-------------------|-----------------|
| GG CLSSL60W | 8 - 12W | 4.5V / 15W | 3.2V / 20AH | 8 - 12 Hrs | 610 x 230 x 80 |
| GG CLSSL100W | 10 - 15W | 6V / 25W | 3.2V / 30AH | 8 - 12 Hrs | 747 x 280 x 80 |
| GG CLSSL200W | 18 - 25W | 6V / 60W | 3.2V / 40AH | 8 - 12 Hrs | 1045 x 390 x 95 |



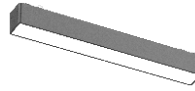


MAGNETIC TRACKS



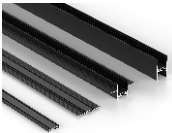
LINEAR SPOT:

Wattages Available:
 6W / 12W / 18W / 24W / 36W



LINEAR PROFILE:

Wattages Available:
 12W / 24W / 36W / 48W



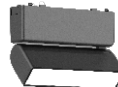
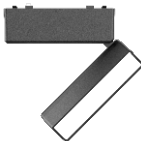
TRACKS:

Recess / Surface /
 Hanging / Sleek Surface
Length Available: 1 Meter / 2 Meter



TRACK LIGHTS:

Watt Available:
 7W / 12W / 18W



TILTABLE LINEAR SPOTS / PROFILE: Watt Available: 6W / 12W / 18W / 24W



TESTIMONIALS

Coming together is a **beginning**, staying together is progress and working together is **SUCCESS**.



GLOW GREEN ENERGY LTD.

14/8, Site 4, Sahibabad Industrial Area,
Ghaziabad - 201010 (UP)
Tel: +91-9205892476 / 77
E-mail: info@glowgreen.in
Website: www.glowgreen.in

"WE DO OEM SERVICES."

We are fully committed for...

